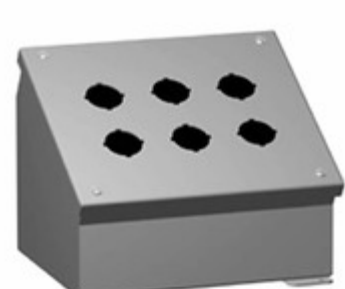


1490MJ20



Part Number: 1490MJ20
Manufacturer: Hammond Manufacturing
Description: CONSOLE STEEL GRY 11.75" L X 13"W
Data sheet: [1490MJ20 Drawing](#)
[1490, 1490M Series](#)

RoHS Status: Lead free / RoHS Compliant
Ship From: Hong Kong
Shipment Way: DHL/Fedex/TNT/UPS/EMS

Images are for reference only.
 See Product Specifications for product details.
Buy 1490MJ20 with confidence from Component-World.HK, 1 Year Warranty

[Request For Quotation](#)

PRODUCT PARAMETER

Part Number	1490MJ20	Manufacturer	Hammond Manufacturing
Description	CONSOLE STEEL GRY 11.75" L X 13"W	Lead Free Status / RoHS Status	Lead free / RoHS Compliant
Quantity Available	582 pcs	Data sheet	1490MJ20 Drawing 1490, 1490M Series
Category	Boxes, Enclosures, Racks	Weight	16 lbs (7.3kg)
Thickness	14 Gauge	Size / Dimension	11.750" L x 13.000" W (298.45mm x 330.20mm)
Shipping Info	Shipped from Digi-Key	Series	1490M
Ratings	IP54, JIC EGP-1-1967, NEMA 12,13, UL-508	Material Flammability Rating -	
Material	Metal, Steel	Manufacturer Standard Lead Time	4 Weeks
Lead Free Status / RoHS Status	Lead free / RoHS Compliant	Height	9.000" (228.60mm)
Features	Pushbutton Holes - 20, Slope, 30°, 60°	Detailed Description	Console Metal, Steel Gray Hinged Lid, Slanted Top 11.750" L x 13.000" W (298.45mm x 330.20mm) X 9.000" (228.60mm)
Design	Hinged Lid, Slanted Top	Container Type	Console
Color	Gray	Area (L x W)	153 in² (987 cm²)

Component-World.com is a Reliable Stocking Distributor of Electronic Components. We specialize in all Hammond Manufacturing series electronic components. We have 582 pieces of Hammond Manufacturing 1490MJ20 in stock available now. Request a quote from electronics components distributor at Component-World.com, our sales team will contact you within 24 hours.

RFQ Email: info@Components-World.com

RELATED PRODUCTS

	Part#: 1490MG6 Description: CONSOLE STEEL GRAY 7.25"LX8.5"W	Manufacturers: Hammond Manufacturing	RFQ
	Part#: 14911 Description: RKWTS 4-288/45 M	Manufacturers: Lumberg Automation	RFQ
	Part#: 1491000000 Description: CABLE GLAND 17-25MM PG29 PLASTIC	Manufacturers: Weidmuller	RFQ
	Part#: 1490MJ12 Description: CONSOLE STEEL GRAY 11.75" X 8.5"	Manufacturers: Hammond Manufacturing	RFQ
	Part#: 1490MJ16 Description: CONSOLE STEEL GRAY 11.75"X10.75"	Manufacturers: Hammond Manufacturing	RFQ
	Part#: 14910 Description: RKWT/LED A 4-3-224/115 M	Manufacturers: Lumberg Automation	RFQ
	Part#: 14915 Description: ROLOC AND BUTTON	Manufacturers: 3M	RFQ
	Part#: 149159002122106 Description: CONN SSL PLUG 2POS 3MM IDC	Manufacturers: AVX Corporation	RFQ
	Part#: 1491 Description: ROUND SPACER #8 PHENOLIC 3/8"	Manufacturers: Keystone Electronics Corp.	RFQ
	Part#: 1490MG10 Description: CONSOLE STEEL GRAY 7.25" L X 13"W	Manufacturers: Hammond Manufacturing	RFQ
	Part#: 1490MK25 Description: CONSOLE STEEL GRAY 14" L X 13"W	Manufacturers: Hammond Manufacturing	RFQ
	Part#: 1490MK30 Description: CONSOLE STEEL GRY 14" L X 15.25"W	Manufacturers: Hammond Manufacturing	RFQ
	Part#: 1491 Description: CC3000 WIFI SHIELD	Manufacturers: Adafruit	RFQ
	Part#: 1490MG4 Description: CONSOLE STEEL GRAY 7.25"LX6.25"W	Manufacturers: Hammond Manufacturing	RFQ
	Part#: 1490MG12 Description: CONSOLE STL GRAY 7.25"LX15.25"W	Manufacturers: Hammond Manufacturing	RFQ
	Part#: 1490MD4 Description: CONSOLE STEEL GRAY 3.5" L X 10"W	Manufacturers: Hammond Manufacturing	RFQ
	Part#: 1490MG16 Description: CONSOLE STL GRAY 7.25"LX19.75"W	Manufacturers: Hammond Manufacturing	RFQ
	Part#: 1490MTN Description: CABLE CUTTER,SHEAR CUT,STEEL,14"	Manufacturers: Apex Tool Group	RFQ
	Part#: 1490MG8 Description: CONSOLE STL GRAY 7.25"LX10.75"W	Manufacturers: Hammond Manufacturing	RFQ
	Part#: 1490MH9 Description: CONSOLE STEEL GRAY 9.5"LX8.5"W	Manufacturers: Hammond Manufacturing	RFQ

Related keywords for 1490MJ20

Hammond Manufacturing 1490MJ20	1490MJ20 distributor	1490MJ20 supplier	1490MJ20 price
1490MJ20 download datasheet	1490MJ20 datasheet	1490MJ20 stock	buy 1490MJ20
Hammond Manufacturing 1490MJ20			